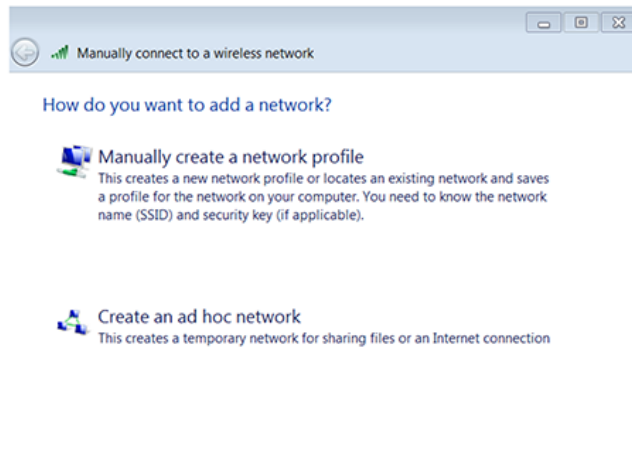


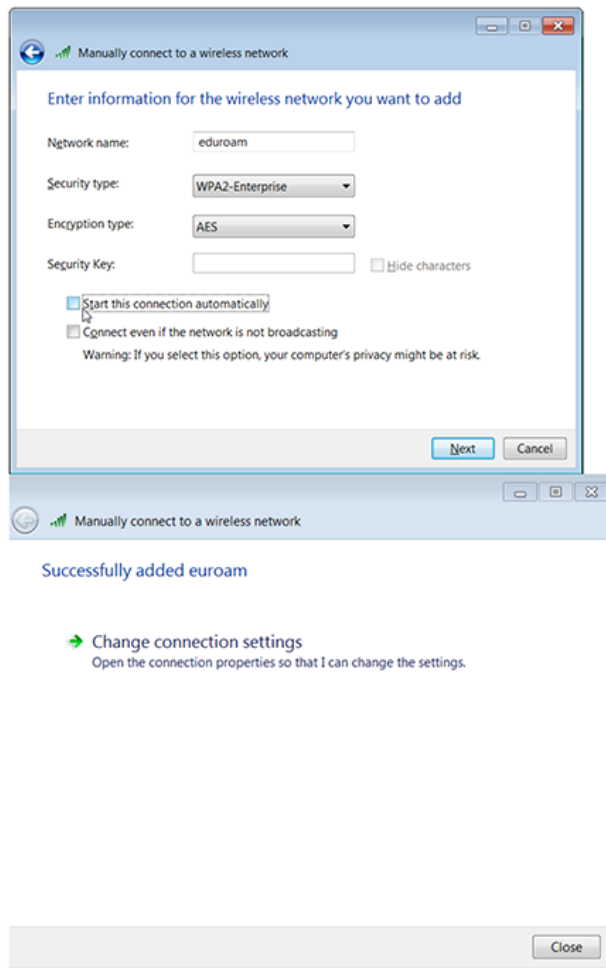
1. Ensure that your wireless card is on.
2. In the lower right corner of the screen look for the Network Connection Icon. Right click on it and left click on Open Network and Sharing Center.

3. Click Manage wireless networks.

4. Click add.

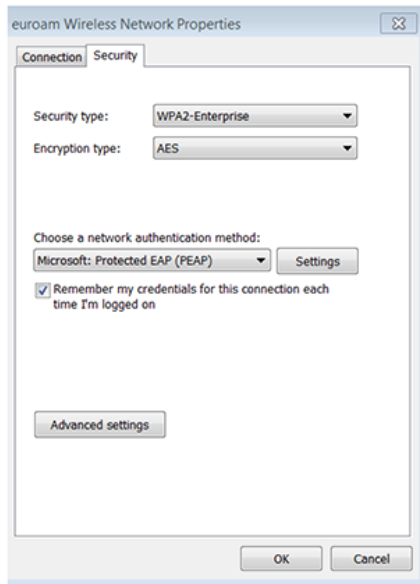


5. Manually create a network profile.

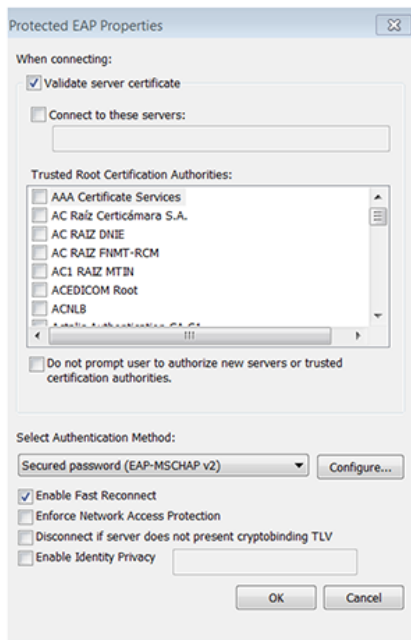


6. Network name: eduroam  
Security type: WPA2-Enterprise  
Encryption type: AES  
Uncheck, Start this connection automatically. Click next.

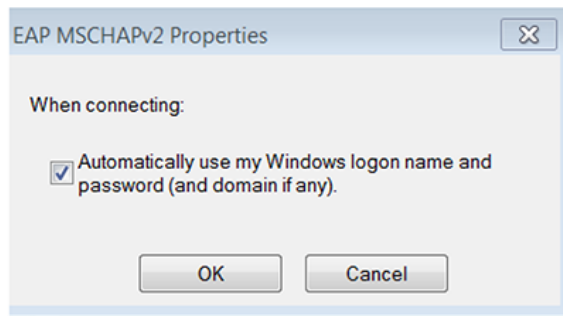
7. Click Change connection settings.



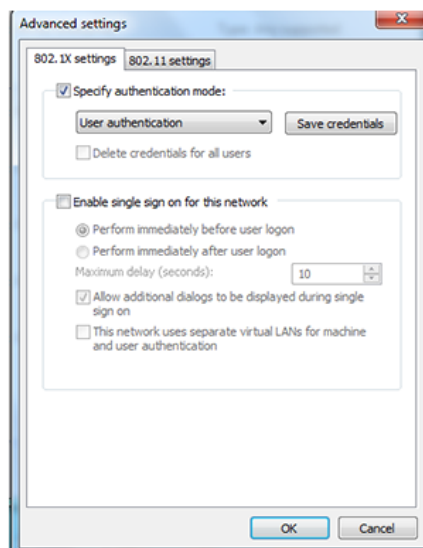
8. Click Security tab. Then click settings.



9. Uncheck Validate server certificate. Click configure.

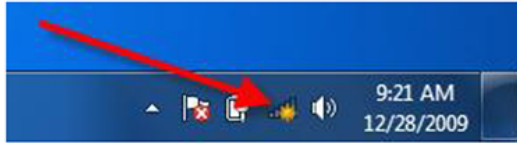


10. Uncheck use my Windows logon name and password (and domain if any). Click ok.



Click "Advanced settings".  
In the 802.1X settings tab, check "Specify authentication mode: and specify "User authentication".

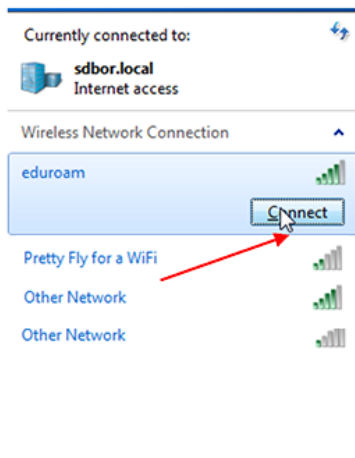
Click "OK" to save the Advanced settings, and again to exit the Wireless Network Properties.



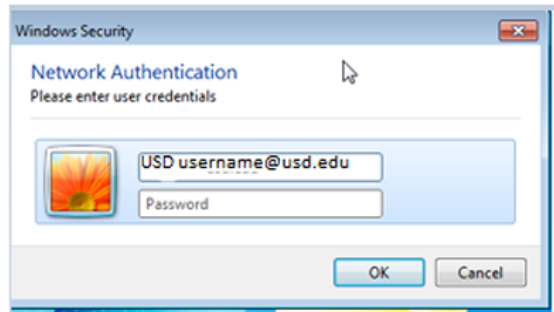
11. Right side of task bar click Network connection icon.



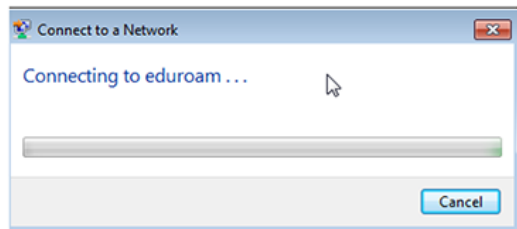
12. Click “eduroam”



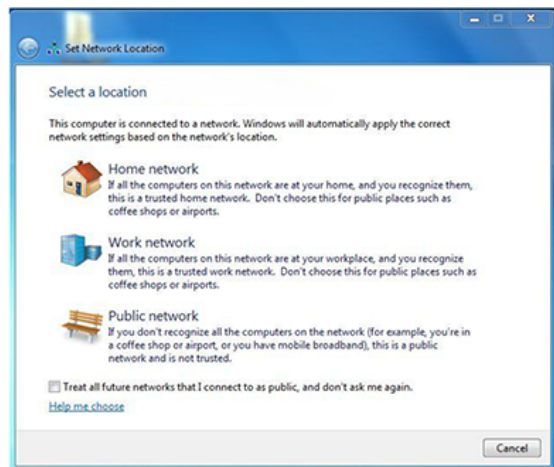
13. Click connect.



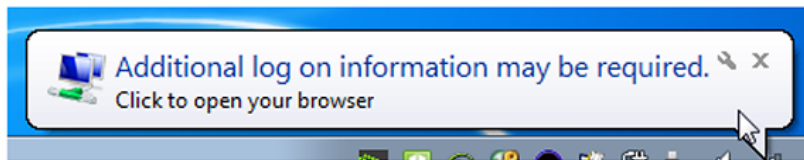
14. Enter your University ID [username@usd.edu](mailto:username@usd.edu), then your password. (Not your email address)



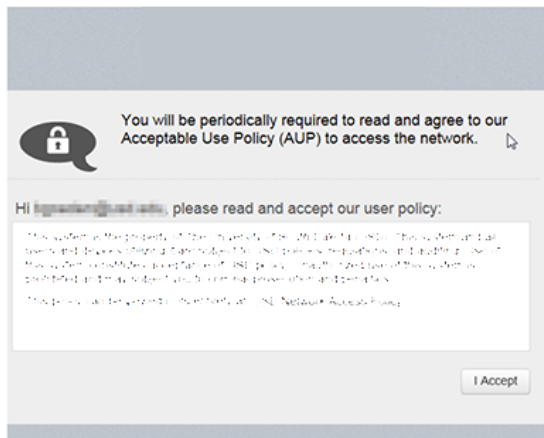
15. This will appear.



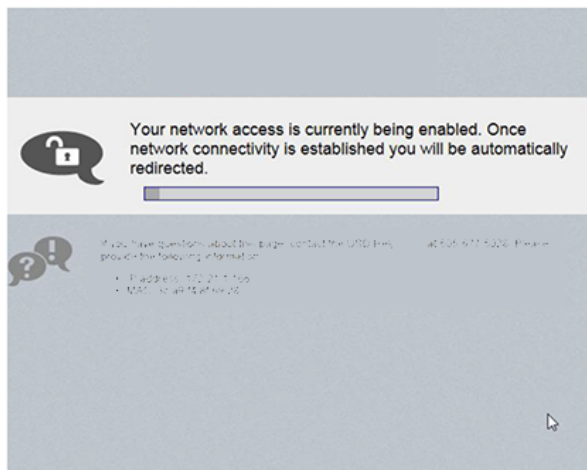
16. Click "Work network"



17. This may appear. Log in again.



18. Click "I accept"



19. Your network connection is now being enabled.