



BLACK HILLS

STATE UNIVERSITY

ABOUT BHSU

Black Hills State University is a comprehensive regional public university located in Spearfish, northern Black Hills, South Dakota. We are a small campus that offers a personalized approach to education and where students are well-known and supported by their faculty.

BLACK HILLS STATE FACTS

ENROLLMENT: 3,539 Students

CAMPUS: 123 acres

ATHLETICS: NCAA Division II, Rocky Mountain Athletic Conference

TEAMS: 14 NCAA DII Sports Teams + 1 NIRA Rodeo Team

MASCOT: Yellow Jacket (Sting)

SCHOOL COLORS: Green & Gold

FACULTY WITH TERMINAL DEGREE: 82%

CLASS STRUCTURE: 99% of classes taught by faculty

HOUSING: 5 Residence Halls (All Co-ed), 8-Building Apartment Complex

LOCATIONS: Spearfish, Rapid City, and Ellsworth Air Force Base
in South Dakota

ACADEMIC PROGRAMS: 52 bachelor's, 5 associate's, 8 master's
degree programs, 24 undergraduate certificates, and 4 graduate
certificates.

STUDENT BODY: 69% from South Dakota from all the 65 South
Dakota counties, 31% from 44 other states and 31 countries, 13%
Federal Cohorts are first-generation college students

GRADUATION: Average of 573 graduates annually

WORKFORCE: 57% of graduates live in South Dakota

ALUMNI: 18,412 alumni internationally

FINANCIAL AID: 92% of BHSU freshman students receive
assistance

AFFILIATION: 4-year South Dakota public liberal arts university

ACCREDITATION: The Higher Learning Commission (HLC), the
Association to Advance Collegiate Schools of Business (AACSB),
the Council for the Accreditation of Educator Preparation (CAEP),
the National Association of Schools of Music, and recognized by the
Society for Health and Physical Educators (SHAPE America.)

BHSU Mission Statement:

BHSU offers a generous number of baccalaureate and select master's degrees, generates new knowledge, promotes excellence in teaching and public engagement, and serves as a regional economic leader. Graduates make significant contributions to the workforce and the betterment of their community.

Spearfish Description:

The Spearfish Canyon area boasts some of the best fly-fishing opportunities in all of South Dakota, with multiple pools and rapids along Spearfish Creek. It also boasts a bounty of hiking and biking trails, providing numerous opportunities to take in the sights and sounds of the Black Hills.

<https://www.travelsouthdakota.com/spearfish-exploring-northern-black-hills#:~:text=The%20Spearfish%20Canyon%20area%20boasts,sounds%20of%20the%20Black%20Hills.>

BHSU Dining Hall Hours:

- Sunday through Saturday
 - Breakfast, 6:30-8:30am
 - Lunch 11:00am-1:00pm
 - Dinner 5:00-6:30pm

BHSU Majors:

Accounting, American Indian Studies, Art | Art Education, Biology | Biology Education, Business Administration, Chemistry, Communication and Media, Early Childhood Special Education, Economics & Finance, Elementary Education, English | English Education, Entrepreneurial Studies, Environmental Physical Science, Exercise Science, Exploratory Studies, General Studies, Graphic Communication, Graphic Design, History | History Education, Human Resource Management, Human Services, Integrated Media, Leadership, Management, Marketing, Mathematics | Mathematics Education, Mathematics & Science Education, Music | Music Education, Outdoor Education, Photography, Physical Education, Physical Science, Political Science, Professional Accountancy, Psychology, Public Relations, Radio-Television, Science Communication, Science Education, Social Science | Social Science Education, Sociology, Spanish | Spanish Education, Special Education - K-12, Speech Education, Sports Media, Theatre Education



About WDTC

Western Dakota Technical College (WDTC) is the only technical college serving the western South Dakota region. The college delivers a personal, career-oriented education ideal for the student pursuing a meaningful profession and prideful future in a high-need occupation. Through active learning, simulation, internships, and industry partnerships, our students graduate ready to make a real and immediate contribution to their employers and communities.

Website Address: Wdt.edu.

Our Mission: WDTC prepares students to be highly skilled professionals through accessible, career-focused programs to improve their lives, while adapting to community workforce needs and positively impacting our economy.

Enrollment: 1,300 students.

Class Sizes: About a 13:1 student to faculty ratio.

Locations: The main WDTC campus is in Rapid City, S.D. There is also a satellite Practical Nursing program location in Whitewood, S.D.

Placement Rate: 99% of our most recent graduates are working, continuing their education, or are enlisted in the military. [*Placement information is derived from graduate surveys, faculty-collected data, placement surveys started six months after graduation, and the South Dakota Department of Labor and Regulation. Overall placement rate is figured by: (responding graduates employed, continuing education, or in military service)/(responding graduates who are seeking employment). The number of program graduates are unduplicated by CIP code.]

Paying for School: Going to college at WDTC is affordable. Our Foundation has awarded 82 full-ride Build Dakota Scholarships, with a combined value of \$1.7 million, for 2022-2023. We also have many additional scholarship opportunities, and our Scholarships Office can help you apply. Our Financial Aid Office can assist you in filling out the Free Application for Federal Student Aid (FAFSA) and help you identify other outside funding agencies.

Western Dakota Technical College Programs:

At Western Dakota Technical College, you can earn a degree, in a high-need career field, in two years or less. The college offers nearly 40 career programs.



SOUTH DAKOTA MINES®

Mission Statement: **OUR VISION** is to develop world-class leaders in science and engineering to benefit society.

OUR MISSION is to educate scientists and engineers to address global challenges, innovate to reach our creative potential, and engage in partnerships to transform society.

WE VALUE integrity, ingenuity, inclusion, and impact.

Why South Dakota Mines

The South Dakota School of Mines & Technology (South Dakota Mines) is committed to excellence in science and engineering academics and research and to developing the next generation of leaders and problem-solvers. The university offers a wide array of bachelor's, master's, and doctoral degrees.

Located in Rapid City in the beautiful Black Hills of South Dakota, South Dakota Mines offers a rigorous academic experience supported by small class sizes, committed faculty members, and many student

development programs and organizations. We're known for:

- STEM Academics
- Personal Attention
- Outstanding Internship Opportunities
- Great Value
- Our wonderful location: the Rushmore Region

At South Dakota Mines, we are curious. We are tenacious. We plan to change the world with STEM, and we invite you to join us.

Our programs emphasize hands-on learning in maker spaces and labs that feature the same equipment you'll use on the job. Break things. Build things. Then get paid to do it professionally.

With more than 20 bachelor's degrees in science, technology, engineering, and math (STEM), South Dakota Mines will open a whole world to you.

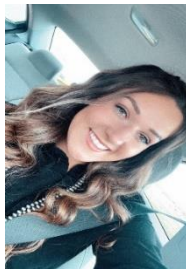
Degrees: Atmospheric & Environmental Sciences, Biology, Biomedical Engineering, Business Management in Technology, Chemical Engineering, Chemistry, Civil & Environmental Engineering, Computer Engineering, Computer Science, Electrical Engineering, Geological Engineering, Geology (and Paleontology), Industrial Engineering and Engineering Management, Mathematics, Mechanical Engineering, Metallurgical Engineering, Mining Engineering, Physics, Pre-Professional Health Sciences, Science Technology and Society

<https://www.sdsmt.edu/Degrees/>

Counselor Intros

Jin Kim is the Director of Career Development and BHSU Dakota Dreams Camp Coordinator. Jin has been at BHSU since November 2021 and is originally from Sheridan, WY. On his free time, he loves to explore new cities and is a foodie! If you have a good joke, make sure to tell Jin as he loves a good laugh.

Chase Huseby is a History Education major. He is a Peer Mentor on campus and the Lead Camp Counselor for the Dakota Dreams Camp, he also gigs with regional rock band Judd Hoos. His hometown is here in Spearfish, SD and his expected graduation date is December 2022. He enjoys playing/listening to music, longboarding, biking, hanging out with friends and family, and being outdoors.



Torrey Anson is a History Education major with a minor in political science. She is also a Peer Mentor on campus and works at a boutique in downtown Spearfish. Her hometown is Miller, SD and her expected graduation is May 2023. In her free time, she enjoys spending time outside, hanging out with friends and family, listening to music, and helping on her family's ranch.



Elsie Schafer is a senior student at Black Hills State University from Mount Ayr, Iowa. She is studying psychology and philosophy. When Elsie isn't at school, she loves to hang outside with her dog Mandy, and her turtle Roy. She loves to read, write, and paint during her free time. She also plays music!



Paige Knabel is an English major and Peer Mentor at BHSU. Her minors include Creative Writing and Professional Writing, and she expects to graduate in Spring 2024. Paige's hometown is Lead, SD, about a 15-minute drive from Spearfish. She enjoys reading, writing, and spending time with her family and friends in her free time.



Dawson Doyen is a Senior at Black Hills State University. He is Majoring in History Education with a Minor in Creative Writing. He is originally from here in Spearfish, South Dakota, where he graduated from High School in 2019. He aims to graduate from Black Hills State in the Fall of 2023. Some fun facts about him: he is a huge Star Wars nerd (and generally Harrison Ford enthusiast) and he likes to try and make people laugh with jokes that may or may not fall short sometimes, but that's okay.



McKenzie Thompson is a senior at Black Hills State University. She is studying Economics and Finance and has a minor in Mathematics. She graduates next May and hopes to eventually become a professor. She is from Canton, SD and enjoys spending time with her friends and playing pickleball.

Instructor Bios

Jamie Schroeder is finishing her sixth year of teaching as an Adapted Physical Educator, with the last four years being here in the Spearfish School District. She is a BHSU Alumni, double majoring in Special Education and Physical Education. She also has a Master of Science degree in Exercise Physiology from the University of Northern Colorado. Jamie's path to education was unconventional, however, she ultimately found her passion in creating meaningful and inclusive movement opportunities for all levels.

Dr. Tim Klavon teaches science education methods at Black Hills State University. Before that, he taught middle and high school science for over 20 years in Pennsylvania. When not teaching, he can be found gaming with friends or hiking on the trails around Spearfish.

Dr. Sharman Siebenthal Adams is a Professor of Education at Black Hills State University. Passionate about helping individuals actively engage in career exploration through the use of various learning models, she strives to incorporate learners of all ages and talents. Dr. Adams looks forward to supporting learners throughout the following workshops, helping attendees challenge their own thinking and learning while applying collective knowledge to their endeavors.

Tentative Room Assignment

Student 1

Lilian

Molly

CJ

Kathryn

Tessa

Gabrielle

Elsie

Tylana

Jordyss

IzaBella

Kinslee

Jailynn

Kiera

Sadie

Student 2

Sophie

Genevieve

Omara

LaReina

Bryn

Madisyn

Adrianna

Mia R.

Kyra

Cynthia

Aspen

Addyson

Mia H.

Student 1

Gage

Tay'Vaughn

Tre'Cen

Zachary

Zaydn

Ryder

David

Troy

Jackson

I'than

Henry

Caleb

Student 2

Odin

Tayvin

Carson

Reuben

Daniel

Landon M.

Taveyon

Ryker

Brandon

Landon P.

William



BLACK HILLS

STATE UNIVERSITY

Sunday, June 26th

10:30AM-12:00AM - Check-in (Bordeaux Hall, BHSU)

11:00AM-12:30PM - Parents Luncheon - Overview of Program, Schedule, and Activities (The Hive Dining Center, BHSU)

11:00AM-1:00PM Student Lunch - Ice Breaker Activity (The Hive Dining Center, BHSU)

1:00PM-1:20PM Welcome Activity (Jonas 305)

1:00PM Career Pathway Session: Teacher Education (CIP Series 13), BHSU

1:30PM-5PM 3 Concurrent Sessions

- Jonas 307, 308, 309
- Woodburn Theatre
- Young Center – KLL/Outside

5:00PM-5:30PM Outside – Culminating Activity

5:30PM Dinner (The Hive Dining Center, BHSU)

6:30PM Game Night: Bordeaux Hall

10:30PM Room checks



SOUTH DAKOTA MINES

Monday, June 27th

6:30AM-7:45AM Breakfast (The Hive Dining Center, BHSU)

8:00AM Transportation to the South Dakota School of Mines and Technology (Rapid City, SD)

9:30AM Welcome to South Dakota Mines!

9:45AM-11:00AM Career Pathway Session:
Biomedical/Medical Engineering (CIP 140501) – CBEC 3305

9:45AM-11:00AM Career Pathway Session: Chemical Engineering (CIP 140701) – CBEC 3305

9:45AM-11:00AM Career Pathway Session:
Metallurgical Engineering (CIP 142001) – CBEC 3305

11:00AM-11:30AM Campus Tour

11:30AM-12:30PM Lunch (Hardrocker Cafe, South Dakota Mines)

12:30PM-1:00PM Icebreaker Activity

1:30PM Business/Industry Tour #1 (Rapid City, SD) – Homeslice Media Group

3:00PM Business/Industry Tour #2 (Rapid City, SD) –
Dahl Art Center

- Students will be split into 2 groups: The Educational side and the Business/Industry side

4:30PM- Load Bus for Spearfish

5:30PM Dinner (The Hive Dining Center, BHSU)

6:30PM Mentalist- Noah Sonie Meier Hall Recital Hall



You're probably asking yourself "What is **HYPE**?"

HYPE is a groundbreaking new show that seamlessly blends the art of magic with mindreading and hypnosis to create a truly unique interactive journey for your audience that will leave them questioning everything.

HYPE was created by Noah Sonie, a performer with years of experience and a unique high energy performance style that is all his own. Noah offers a creative new outlook on the world of magic and entertainment bringing a modern, comedic, and engaging perspective to the stage.

10:30PM- Room Check



Tuesday, June 28th

6:30AM-7:45PM Breakfast (The Hive Dining Center, BHSU)

8:00AM Transportation to Western Dakota Technical College (Rapid City, SD)

9:30AM Welcome to WDT – College Event Center

9:45AM-10:45AM Career Pathway Session: Computer Science (CIP 110101)

11:00AM-12:00PM Career Pathway Session: Nursing - Practical & Registered Nursing (CIP 513801)

12:00PM-1:00PM Lunch (Boxed lunch by: Aladdin Dining Services, BHSU) – College Event Center

1:30PM-4:00PM Business/Industry Tour #3 & #4 (Rapid City, SD) – Reptile Gardens

4:30PM- Load bus for Spearfish

5:30PM- Dinner (The Hive Dining Center, BHSU)

7:00PM Waterpark- Spearfish Recreation and Aquatic Center

10:30PM- Room Checks



BLACK HILLS

STATE UNIVERSITY

Wednesday, June 29th

6:30AM-8:00AM Breakfast
(The Hive Dining Center, BHSU)

8:00AM-12:00PM Career Pathway Session: BHSU
School of Natural Sciences – Jonas Science East Lobby

- 4 Concurrent Sessions

12:00PM-1:00PM Lunch
(The Hive Dining Center, BHSU)

1:30PM Painting with **Evan Struck**
Jonas 304

3:00PM Business/Industry Tour #5 (Black Hills, SD)-
Sanford Underground Lab Visitor's Center

5:30PM Dinner (The Hive Dining Center, BHSU)

6:30PM- Speed Painter- Evan Struck

Jonas 305



Evan Struck transforms blank canvases into masterpieces in his hour-long college show while incorporating elements of pop culture, music, movies, sports, and more! Get ready for all-new paintings including blacklight, audience participation, and multiple canvases. This show combines both music and color creating a multi-sensory experience. Also, Evan creates a custom painting related to your college or university that could be used to help raise money for your school!

10:30PM - Room Check



BLACK HILLS

STATE UNIVERSITY

Thursday, June 30th

6:30AM-8:00AM Breakfast (The Hive Dining Center, BHSU)

8:00AM-8:10AM Introduction to the day and break into groups. Meier Hall 206

8:20AM-11:55AM Concurrent Sessions (x4)

8:20 – 9:10 Concurrent Session 1

9:15 – 10:05 Concurrent Session 2

10:10 – 11:00 Concurrent Session 3

11:05 – 11:55 Concurrent Session 4

- Entrepreneurship (Amy, 205)
- Finance and Accounting (Laura, 210)
- Marketing (Becca, 206)
- Tourism (Teresa, 202)

12:00PM Campers Depart (Bordeaux Hall, BHSU)



Thank You!

Dr. Sharman Siebenthal Adams (BHSU)

Dr. John Allred (VP of Enrollment Management, BHSU)

Maryam Amouamouha (SD Mines)

Dr. Cyndi Anderson (Interim Dean School of Natural Sciences, BHSU)

Dr. Dan Asunskis (BHSU)

Terri Bjorum (BHSU)

Dr. Pamela Carriveau (Interim Provost, BHSU)

Don Coble (BHSU)

Dr. Abigail Domagall (BHSU)

Katrina Donovan (SD Mines)

Dr. Amy Fuqua (Dean, College of Liberal Arts, BHSU)

Jodi Gabriel (BHSU)

Oxana Gorbatenko (BHSU)

Melissa Hart (BHSU)

Rob Houdek (BHSU)

Dawn Hunter (BHSU)

Dr. Katrina Jensen (BHSU)

Dr. Timothy Klavon (BHSU)

Dr. Faye LaDuke-Pelster (BHSU)

Cassie Maser (BHSU)

Justin Nauta (Bookstore, BHSU)

President Laurie Nichols (President, BHSU)

Ms. Laura Prosser (Interim Dean School of Business,
BHSU)

Dr. Justin Ramsey (BHSU)

Dr. Tara Ramsey (BHSU)

Teresa Schanzenbach (BHSU)

Jamie Schroeder (Spearfish School District)

Nancy Shuck (Residence Life, BHSU)

Dr. Betsy Silva (Dean for the College of Education and
Behavioral Sciences, BHSU)

Noah Sonie

Anne Stevens (BHSU)

Evan Struck

Kaysie Tope (Bookstore, BHSU)

Angelica Tyler (BHSU)

Dr. Travis W. Walker (SD Mines)

Becca Walters (BHSU)

Chris Wardell (BHSU)

Molly Weisgram (SD Board of Regents)