



## Library Renovation

February 2021



# Library Building Committee

- Scott Ahola, Library
- Fred Nelson, IT
- Amy Fuqua, Deans
- Aaron Bauerly, Library
- Janette Hettick, Advising
- Shauna Junek, Joy Center
- Priscilla Romkema, Provost
- Randy Culver, Facilities
- Kathy Johnson, Administration
- Jeff Winter, Faculty/Math Center
- Jodi Gabriel, Staff Senate
- Hannah Neumiller, Student Senate





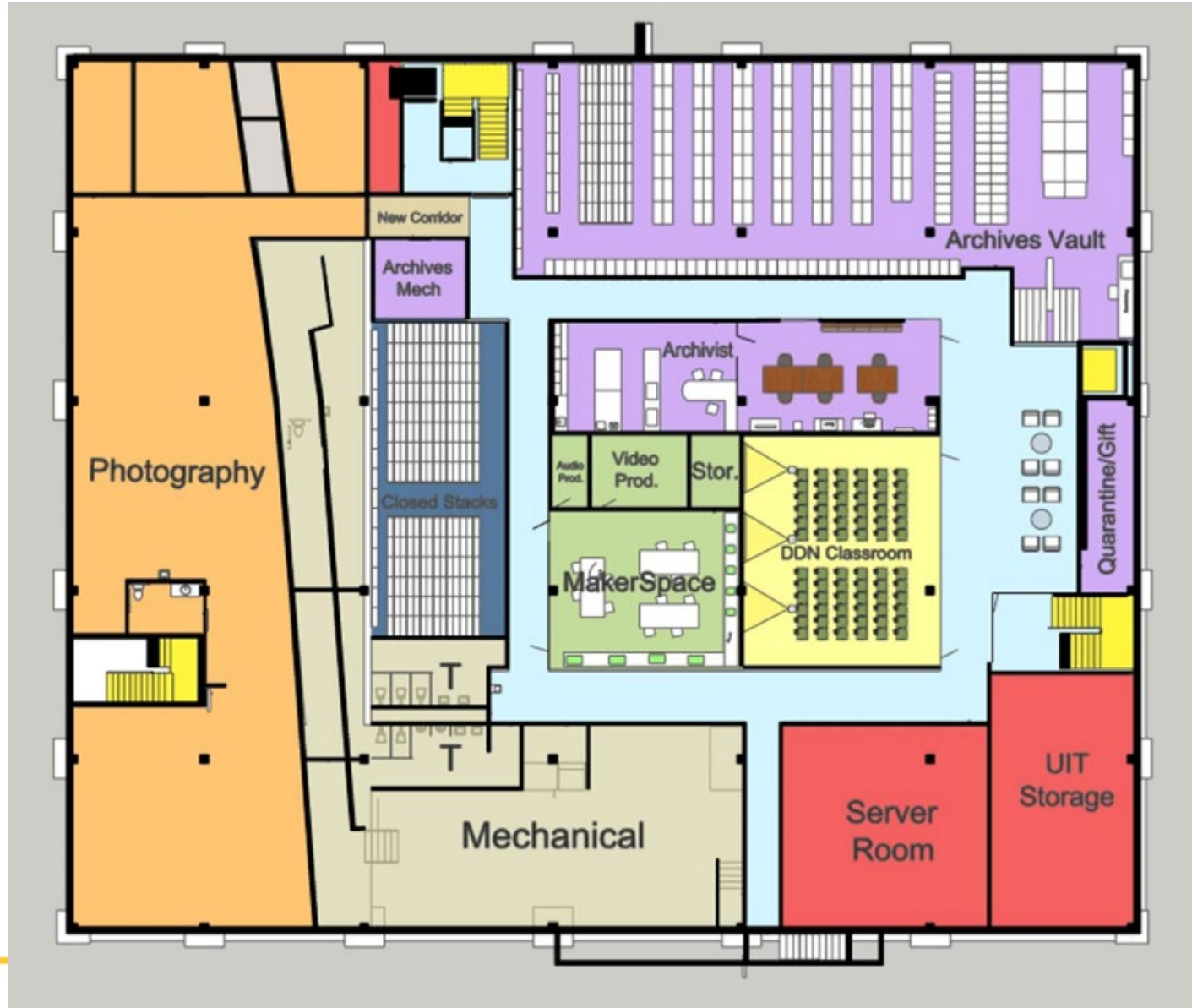
E. Y. BERRY LIBRARY





# Basement - Lower Level

- Archives Vault
- Maker Space
- Video Production
- DDN Classroom
- Server and IT Rooms
- Photography Studio
- Compact Book Storage



# First Floor - Main Level

- Student Success Center
  - Advising
  - Tutoring
  - Career
- Math and Writing Labs
- Library Staff Office Suite
- Help Desk
- Einstein's Cafe & Outdoor Patio
- Open Staircase to Upper Floor

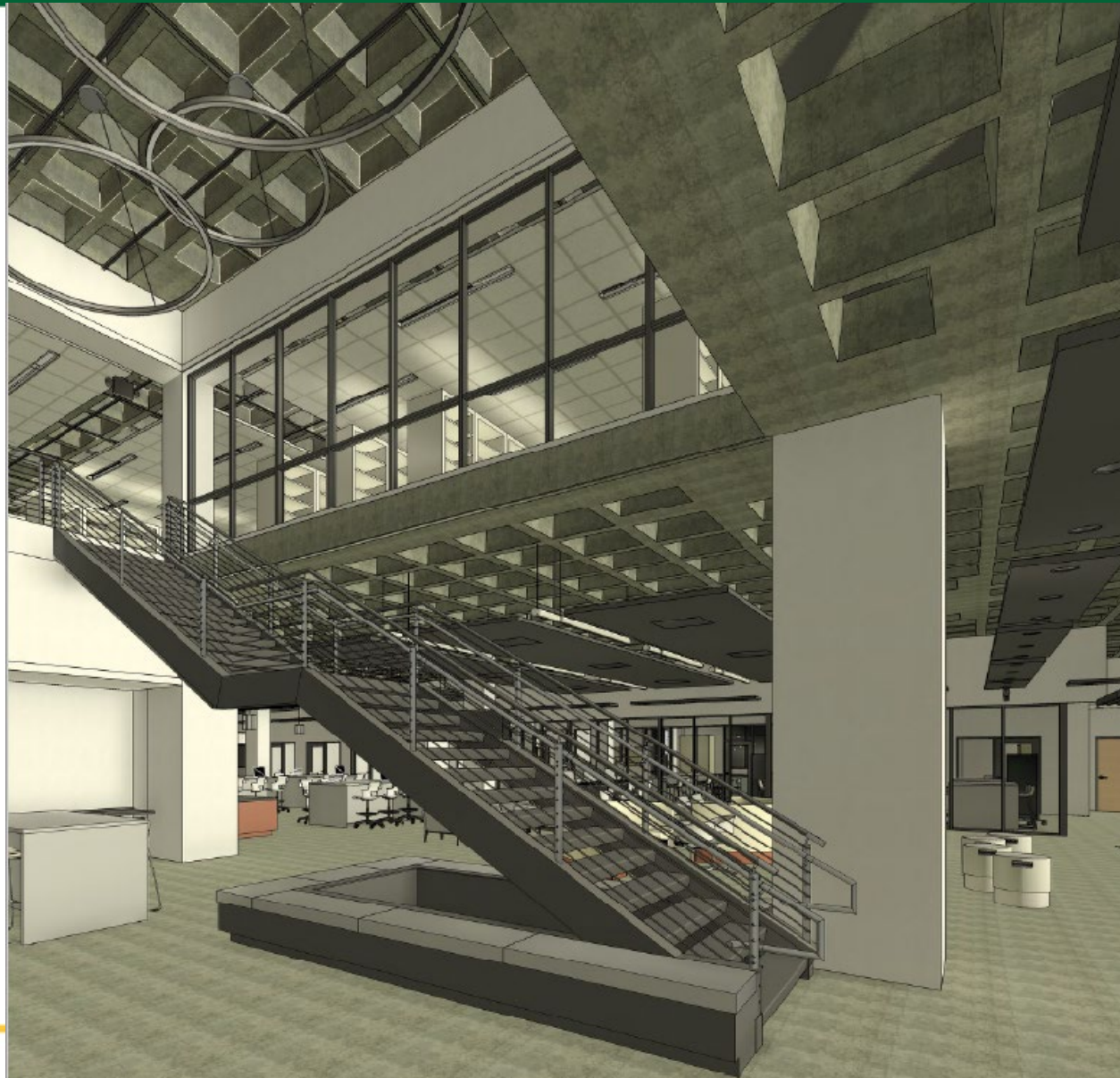


# Café Mural Design

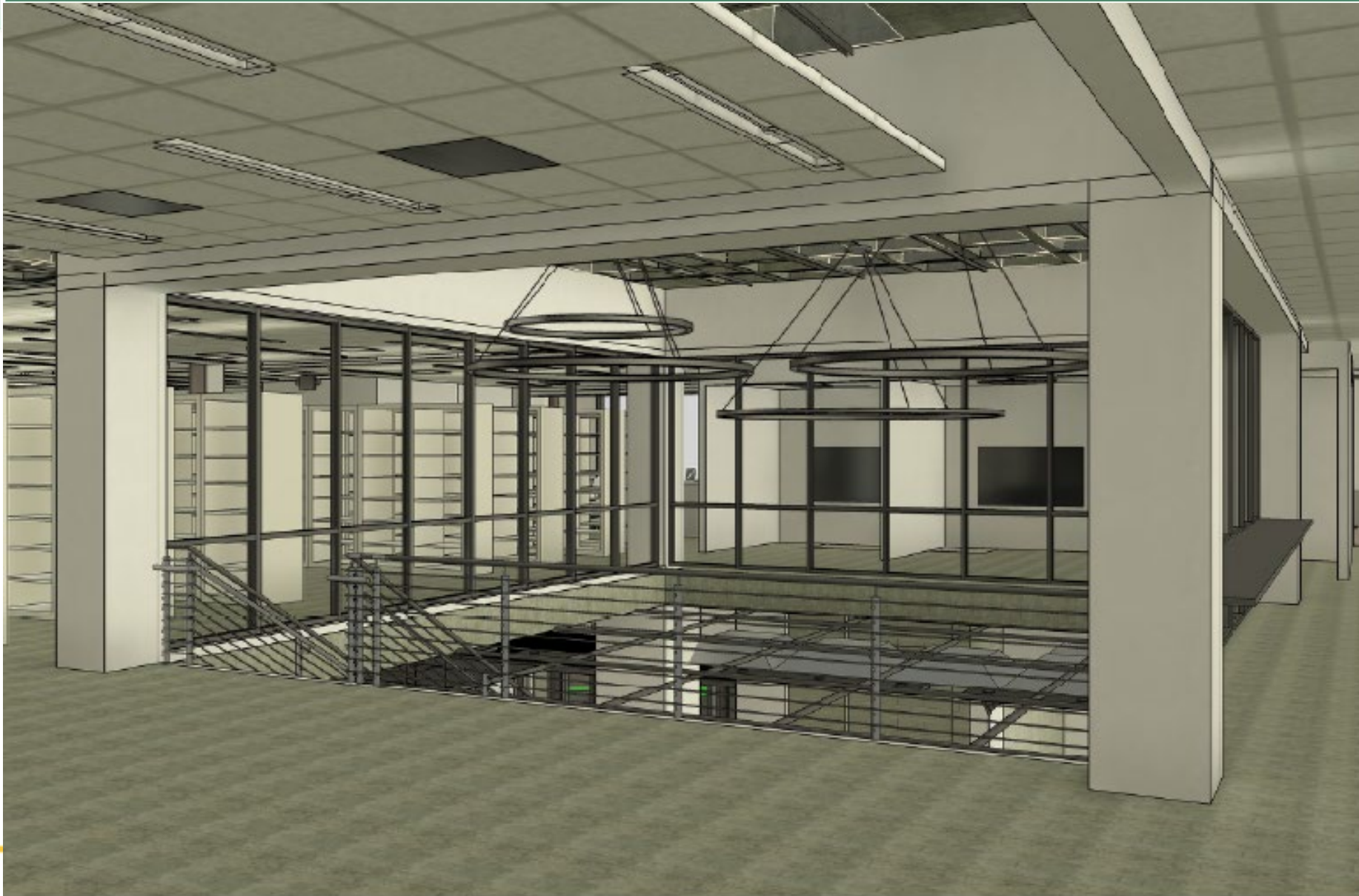




# First Floor Staircase to Second Floor



# Staircase to Second Floor



# Second Floor - Upper Level

- Disability Services
- Testing Center
- NCS Office Suite
- AIMS Office Suite
- Lounge area & Fireplace with glass windows
- Instruction Room
- Book Collection & Shelving



# Fireplace in Upper Lounge Area

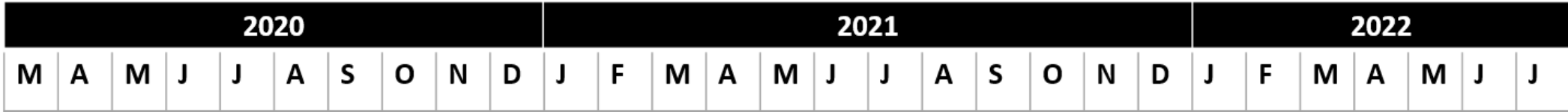




# Upper Lounge - Views of Lookout Mountain



# Library Renovation Timeline



Design Plan



Construction Documents



Bid



Vacate Library & Mobilize



Construction

# Library Books Packed & Moved



- 1<sup>st</sup> and 2<sup>nd</sup> Floor Library books boxed up into 2,183 boxes
  - 1.4 miles of books!
- Boxes moved and stored at Little Jacket Day Care
  - Over 55 tons of books moved!



# Archive Collection Moved

- 2<sup>nd</sup> Floor Archive Materials moved to Little Jacket Day Care
  - Hundreds of items carefully moved and stored





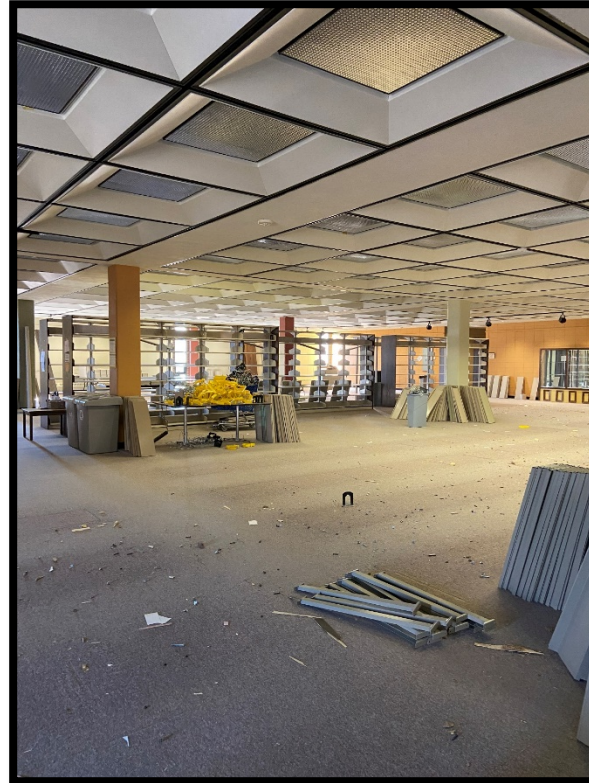
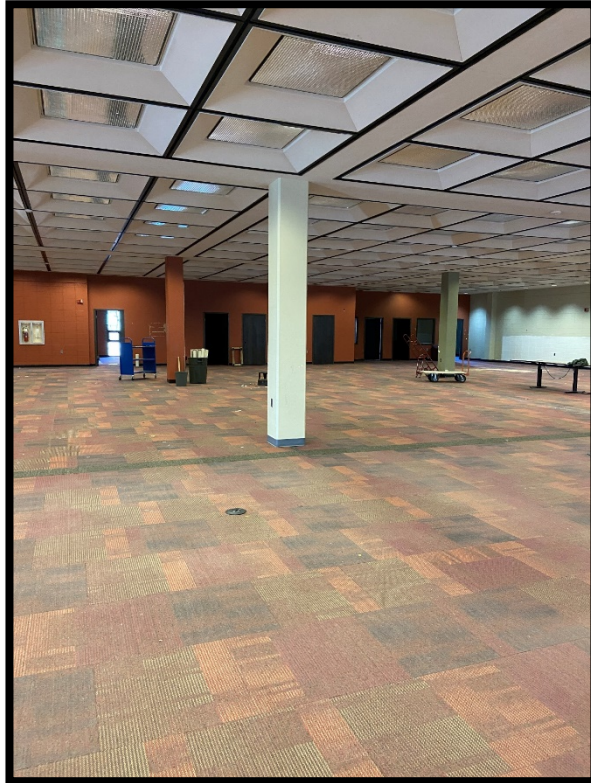
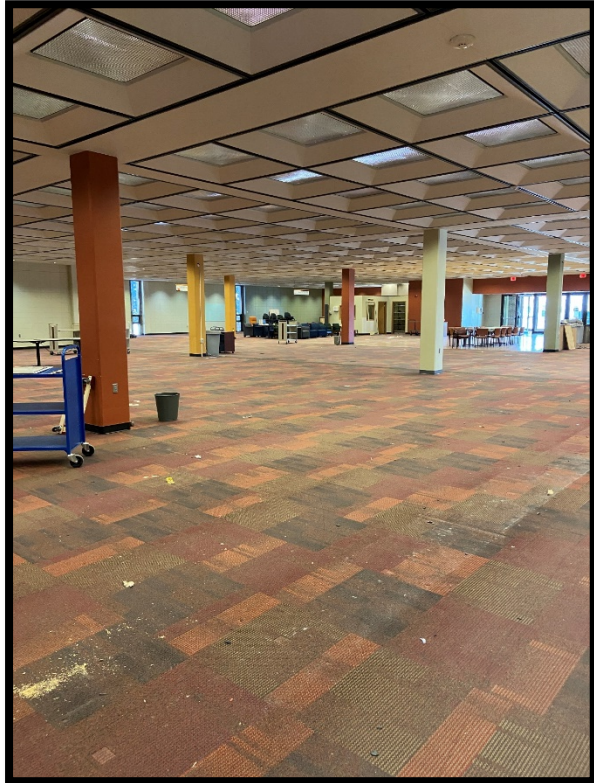
# Material We Recycled

- Over 53K lbs of Iron, Copper and Aluminum recycled
- 7,366 lbs of Ewaste sent to American Recycling Company



# Empty & Ready for Construction

- In 3-months, the staff emptied 85-90% of all three floors
- Shelving, furniture, pictures, other items are all in storage



# Library and Help Desk in JLR

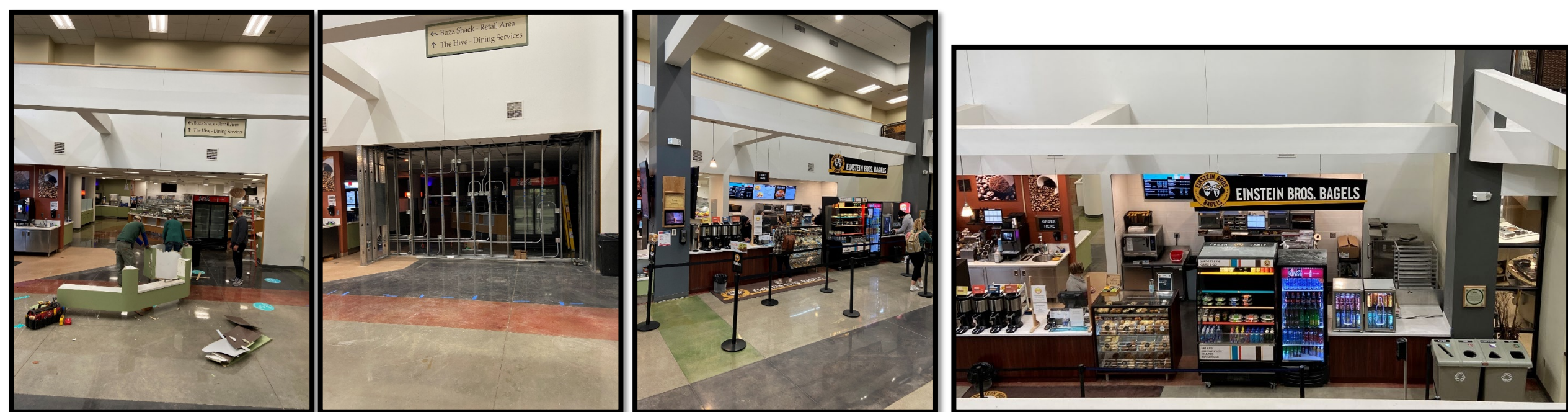
- Library, Archives and NCS staff moved to JLR
- Study area, computers, printers available for students
- Math and Writing Labs available
- Book check-out by request - see circulation desk staff





# Einstein's Moved to Student Union

- Designed, remodeled and relocated in 3 weeks!
- Served Coffee and Bagels on First Day of School - Jan 11
- Great Teamwork by carpenters, painters, electricians, and tile contractor



# Faculty/Staff Parking Lot

- Limited Parking Spots from February 2021 to July 2022
- First 3 rows blocked off for contractor
- Additional Parking in South Parking Lot
  - Jonas Science Building
  - Life Science Building
- Or get to work early, like facilities services!





Questions?

---